



University of Cyprus  
Graduate School

**POSTGRADUATE PROGRAMME PLACES**  
**FOR THE ACADEMIC YEAR 2022-2023**

**ENTRY SEPTEMBER 2022**

The University of Cyprus announces that it will be accepting applications for the following postgraduate programme beginning in **September 2022**, by **Thursday 31<sup>st</sup> of March 2022 until 12 noon.**

**DEPARTMENT OF HISTORY AND ARCHAEOLOGY**

Ten (10) places are available for the new postgraduate programme

**MSc in Digital Heritage and Landscape Archaeology”.**

The programme is taught in English.

Candidates should hold a BA degree in Archaeology, History, Classics, Anthropology or other related fields of research (History of Art, Architecture, Geography, Geology, Topography, Environmental Sciences, Biology, Physics, Chemistry, Computer Science, Engineering) from recognized universities.

Graduates of the University of Cyprus and Greek Universities must have an undergraduate diploma with a cumulative grade of **6,5** or higher. The equivalent is required for graduates from other universities. The applicants must also speak English at a satisfactory level.

The applications should include the following:

1. A Curriculum Vitae
2. Certified copies of University degrees or confirmation of graduation
3. Copy of English language certificate: (a) for admission of international students, (b) for admission to an English-language postgraduate programme, (c) for admission to a postgraduate programme where knowledge of English is a prerequisite. Applicants

must speak English at a satisfactory level: GCE or TOEFL with a grade “B” or higher for GCE- O’ level, and 600 for TOEFL or 6.5 for IELTS (this does not apply to native speakers or holders of a degree from an English speaking University).

4. Copies of Transcripts for all programmes of study graduate and undergraduate.
5. A brief (1 page / up to 650 words) statement of personal goals and research interests (in English).
6. The names and emails of at least two (2) referees (University Professors) familiar with the candidate and his/her academic performance. Candidates should request letters of recommendation to be sent directly to the University. The Department may request additional confidential information from referees. The reference letters are electronically submitted through the online application system.

Candidates who meet the necessary requirements will be called for an interview.

**A number of fee-waiver scholarships will be offered to the best full-time registered candidates admitted in the graduate programme.**

**More Information:**

**Programme Coordinator:** Professor Apostolos Sarris, Telephone: +357 – 22893572.  
+30 - 6944789404

Email: [asarri01@ucy.ac.cy](mailto:asarri01@ucy.ac.cy)

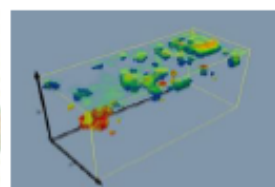
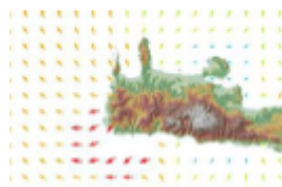
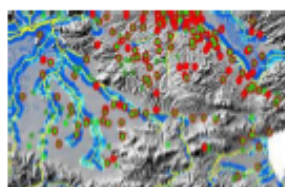
**Department's Secretary:** Tel: 22 892180, 22 893560, Fax: 22 895068

Email: <http://www.ucy.ac.cy/hisarch/en/>

**Submission of applications:**

Applications can be submitted electronically using the online application system [http://ucy.ac.cy/postgraduate\\_appl\\_en](http://ucy.ac.cy/postgraduate_appl_en) by **Thursday, 31st March 2022 until 12 noon.**

It is the applicant’s responsibility to ensure that their application has successfully been submitted. Upon successful submission, the candidate will receive an automated confirmation e-mail.



# Digital Heritage and Landscape Archaeology Graduate Program (MSc.)

### For further information:

Archaeological Research Unit  
Dept. of History & Archaeology  
University of Cyprus  
P.O Box 20537, 1678 Nicosia  
Telephone: +357 22 893560  
Email: [archlgv@ucy.ac.cy](mailto:archlgv@ucy.ac.cy)

### Program Coordinator:

Prof. Apostolos Sarris  
"Sylvia Ioannou" Chair on Digital Humanities  
Tel.: +357 22 893568,  
+30 6944 789404  
Email: [asarri01@ucy.ac.cy](mailto:asarri01@ucy.ac.cy)

### Program Web site:

<https://www.ucy.ac.cy/mscqjdh/>

The Master's program (MSc.) **Digital Heritage and Landscape Archaeology** of the University of Cyprus is a unique postgraduate program in the area of the E. Mediterranean that offers a concrete interdisciplinary academic course platform dealing with the application of Spatial Technologies and Geoinformatics in the wider domain of Digital Humanities. The program acts as an interface between New Technologies and the Humanities, exposing students to the latest spatial technological developments, providing hands-on training and skills to different instrumentation and software, promoting a critical perspective of their application in terms of addressing archaeological and historical oriented questions and opening a dialogue between different disciplines. The MSc. program is implemented under the auspices of the Sylvia Ioannou Foundation. **A number of tuition fee waiver scholarships will be granted** to the best candidates according to the points earned in the course of admission.

### Why Choose the University of Cyprus?

The University of Cyprus ranks among the Top 150 Institutions in Archaeology worldwide in the QS World University Rankings 2019 and 2020.

The University emphasizes on the international students and has created a fertile ground for conducting research in collaboration with worldwide internationally recognized researchers and Institutions.

At the same time, the weather and the historical and ancient landmarks of Cyprus offer a stimulating environment to work.

### Entry Requirements

- Digital copy/ies of Bachelor degree/s from a recognized University with a cumulative average of 6.5/10 or higher.
- University Transcript
- Two reference letters
- Curriculum Vitae & Letter of intent
- English language certificate TOEFL >600, IELTS >6.5)

Prospective students from disciplines of Archaeology/Anthropology, History, History of Art, Architecture, Geography/Earth/Environmental Sciences, Topography, Physics, Computer Science, Engineering...

[https://applications.ucy.ac.cy/postgraduate\\_appl/MNG\\_USER\\_en.login\\_fm](https://applications.ucy.ac.cy/postgraduate_appl/MNG_USER_en.login_fm)

### Courses 2 semesters + 1 Semester MSc. thesis

#### Core Module

- Introduction to GIS Technologies (GIS I)
- Geospatial Analysis and Modelling in GIS
- Applications of Geoinformatics in Archaeology
- Computational & Analytic Techniques
- Advanced Topics in Digital Humanities

#### Elective

- Settlement and Landscape Archaeology
- Maritime Cultural Landscape
- Mediterranean Island Landscapes
- Introduction to Cultural Heritage Management
- Practical Training in Field Archaeology

Official Language of the Program: ENGLISH